



CENTAUR ALARMS

LIMITED

Hikvision NVR/DVR Quick-Guides GUI 4.0

Live View, Playback, Backup of Footage and
Hik-Connect setup



Introduction

This tech note will take you through the steps how to playback and backup of footage in the Hikvision DVR/NVR and Hik-Connect setup.

Before you begin

If you are going to playback or backup footage, you will need to connect the mouse to your recorder USB port. You will find at least one on the front and at the back of your recorder.

Table of content:

- 1.1 Navigating in the recorders menu
- 1.2 Live View
- 1.3 Playback
- 1.4 Backing up the footage.
- 1.5 Enable Hik-Connect via device local GUI
- 1.6 Download and Register via Hik-Connect App
- 1.7 Add device via Hik-Connect APP

Installation Table Information

Site Reference	
Installer name	
Installation Date	
Recorder User Name	
Recorder Password	
Hik-Connect User Name	
Hik-Connect Password	



1.1 Navigating in the recorders menu.

Mouse control.

When using the mouse to navigate in the menu.



If you right click without clicking “apply” button
amended settings won’t be valid.



Apply




1.2 Live View

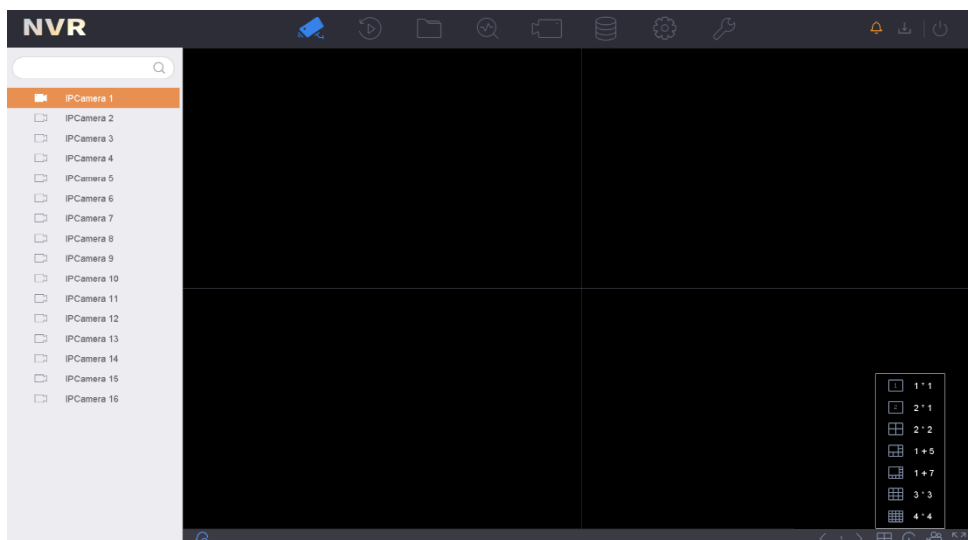
Using the Mouse in Live View

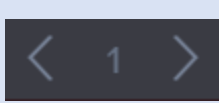

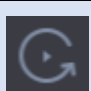



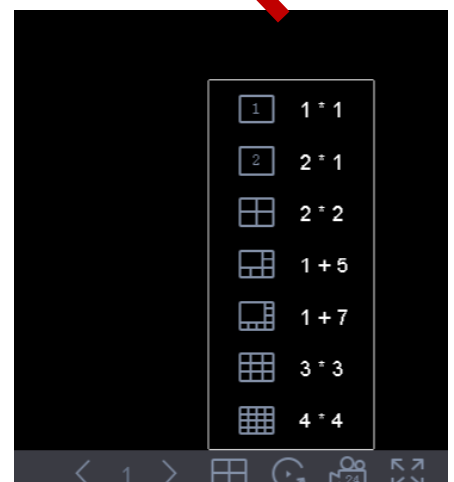
Start Live View

Click  on the main menu bar to enter the live view.

- You can select a window and double click a camera from the list to play the video from the camera in the selected window.
- Use the toolbar at the playing window bottom to adjust the screen layout by choosing from the dropdown list. See picture below.



	Previous Screen/Next Screen	Switch to the next and previous screen.
	Full Screen	Switch to Full Screen
	Start/Stop Auto-switch	Enable/disable the auto-switch of the screens.
	Start all-day continuous recording	Start all-day continuous recording of all channels

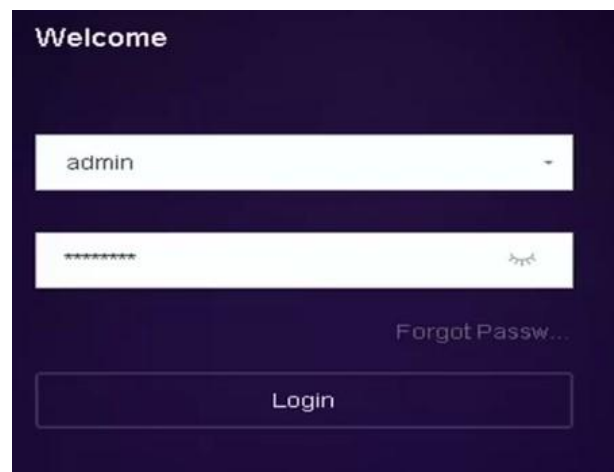


1.3 Playback

1. Right-Click anywhere on the screen using the mouse, this will show the menu below.
2. Select "Playback" from the menu.

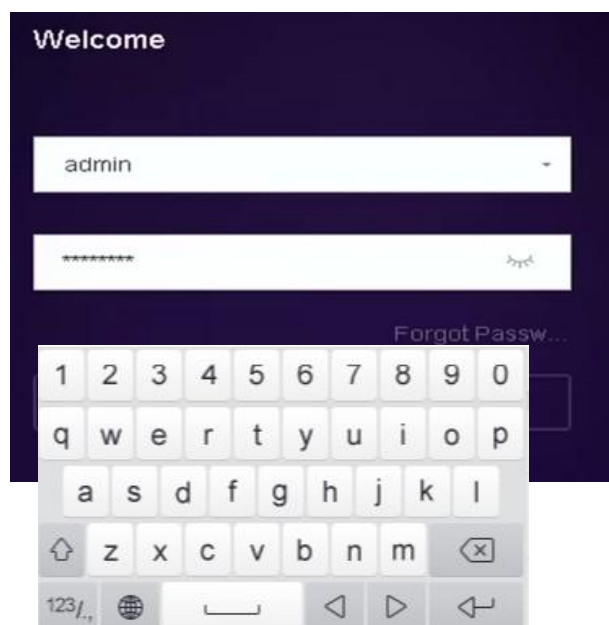


3. You will then be prompted to input the username and password, these credentials will have been issued when the system was installed and demonstrated. Once clicking in the password box, an on-screen-keyboard will appear, with which you must enter your password, then press "OK"



Please Note: If your password is case sensitive you need to click on-screen-keyboard shift button for upper case and click it again to change it back to lower case characters.

See picture below.



4. Select a date in the calendar.

- Use the toolbar in the bottom part of playback interface to control the playing and realize a series of operations.
- Click the channel(s) to execute simultaneous playback of multiple channels.





4. The Screen above should then appear, allowing you to select the cameras of interest from the left-side of the screen by ticking the boxes, these cameras will then show on a split-screen.
5. The date of interest can be selected using the calendar in the bottom left-side of the screen.
- Dates marked with a blue triangle show files recorded for that day.

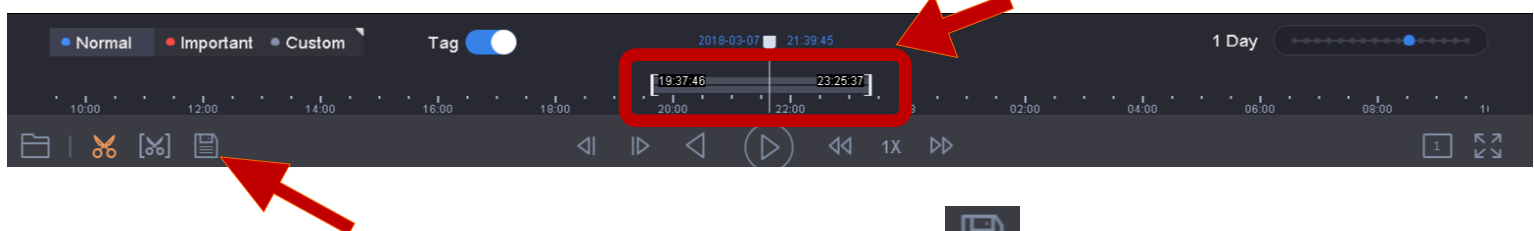



Please Note- If the date of interest is not marked in blue, no footage is available for playback for that day.

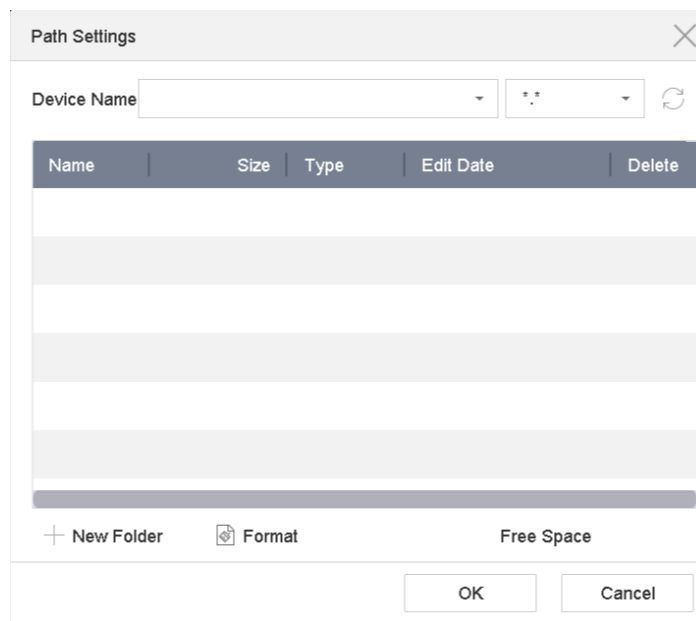


1.4 Backing up the footage.

1. Plug a USB memory stick into the recorder USB port.
2. Search for the event to be backed up using the Playback guide (see overleaf). If you wish to backup multiple cameras, ensure that all the required cameras are selected at the top left of the screen.
3. In the video playback mode, click  to start video clipping operation
4. Set the start time and end time of the video clipping. 
5. Set the start time and end time of the video clipping.



6. Export the video clips to the local storage device. 
7. You will be prompted to save the clip. Click OK.

A screenshot of a 'Path Settings' dialog box. It has a title bar with a close button. Below the title bar is a 'Device Name' field with a dropdown arrow and a refresh icon. Underneath is a table with the following columns: Name, Size, Type, Edit Date, and Delete. The table is currently empty. At the bottom of the dialog, there are three buttons: '+ New Folder', 'Format', and 'Free Space'. At the very bottom, there are two buttons: 'OK' and 'Cancel'.

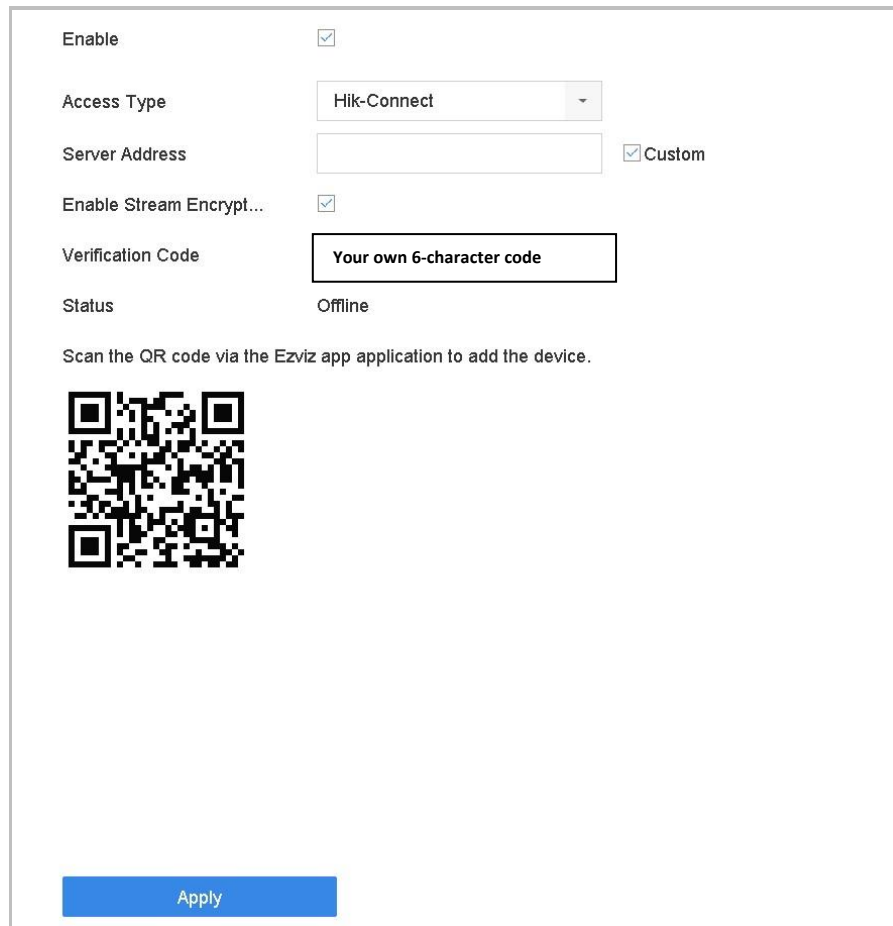
8. The Footage should now be viewable on a computer, if the files will not open, additional software may be required. One possible application with which to replay recorded footage is "[VSPlayer](#)" with can be downloaded from this [link](#).



1.5 Enable Hik-Connect via device local GUI 4.0

1. Enter the device local GUI 4.0, go to **System > Network > Advanced > Platform Access**.

Step 1. Check **Enable** and a **Service Terms** window will pop up. Create your verification code, check to agree to the service terms and click **OK**.



Enable

Access Type


Server Address Custom

Enable Stream Encrypt...

Verification Code

Status Offline

Scan the QR code via the Ezviz app application to add the device.



Apply

Step 2. Check **Enable** and a **Service Terms** window will pop up. Create your **verification code**, check to agree to the service terms and click **OK**.

Step 5. Click **Apply**.

Note:

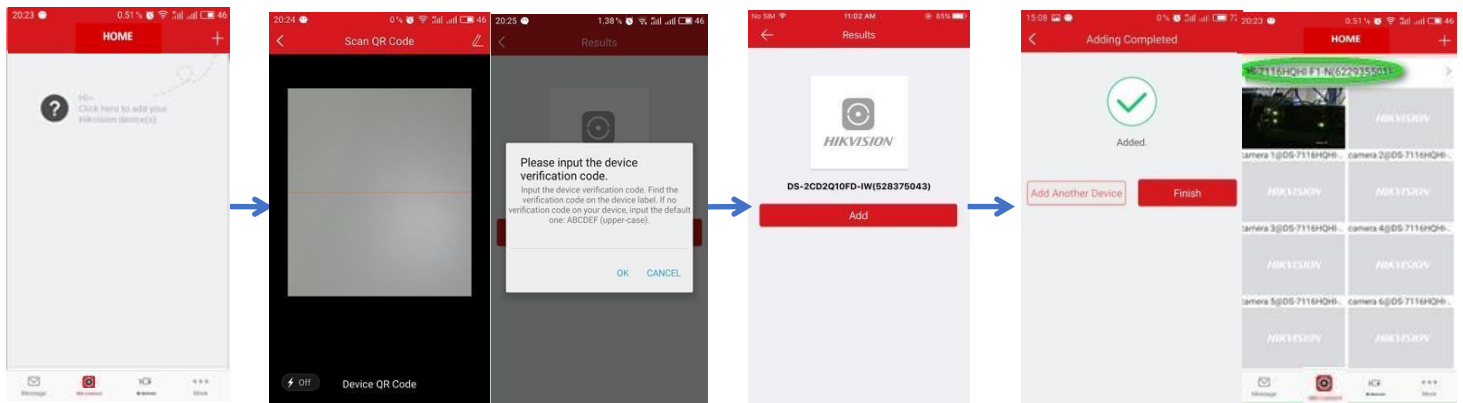
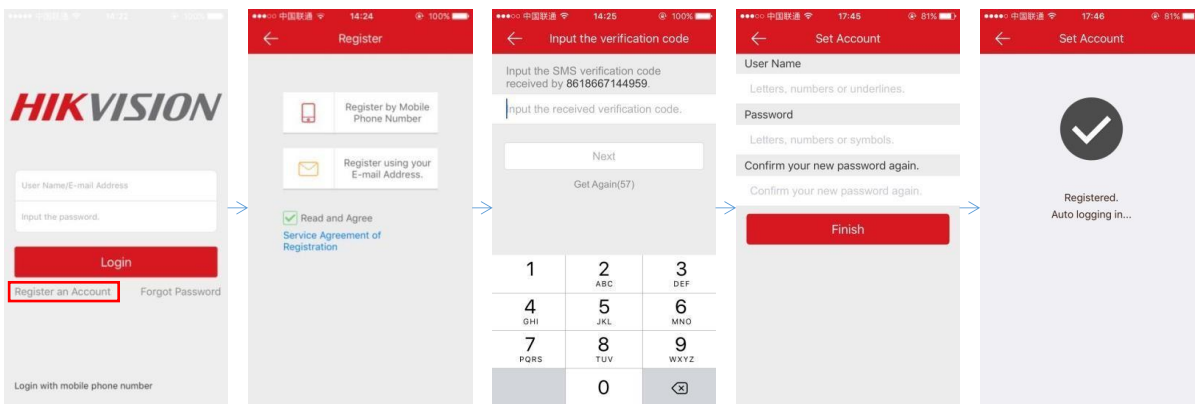
- After configuration, you can access and manage your devices through Hik-Connect app or www.hik-connect.com.
- For more detailed instructions of Hik-Connect, please refer to the help on www.hik-connect.com.



1.6 Download and Register via Hik-Connect App



1.7 Add device via Hik-Connect APP



You'd have to input device verification code manually after scanning device QR

You can modify device domain or port when select the device.



